

# Division to solve problems

- 1 There are 1,360 children in a school.  
A quarter of the children walk to school.  
How many children walk to school?

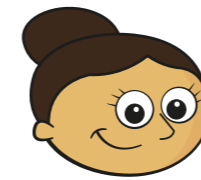
- 2 Huan has saved his pocket money for 5 weeks.  
He gets the same pocket money every week.  
He has saved £16.65  
How much pocket money does Huan get each week?



- 3 Tom is running a 6-kilometre race.  
He has run one-third of the race so far.  
How many more kilometres does Tom have left to run?



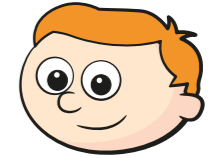
- 4 Dora, Ron and Teddy are making paper chains.



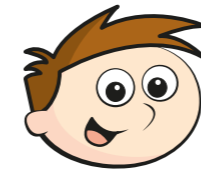
Dora

My paper chain  
is 1.1 m long.

Dora's paper chain  
is twice as long  
as mine.



Ron



Teddy

My paper chain  
is three times longer  
than Ron's.

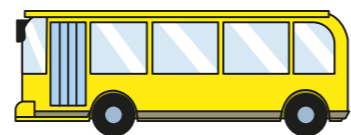
- a) How long is Ron's paper chain?

- b) How long is Teddy's paper chain?

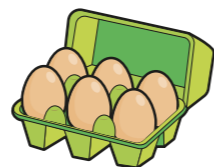
- 5 A water bottle holds 2 litres.  
A leak in the bottle means 25 ml drips out each day.  
How many days will it take until the bottle is empty?

 days

- 6 a) A school bus can hold 30 people.  
There are 726 children going on a school trip.  
How many buses are needed?




- b) A cake needs 4 eggs.  
How many cakes can be made from 345 eggs?




- 7 Shop A sells 5 tins of paint for £23.40  
Shop B sells 3 tins of the same paint for £14.01



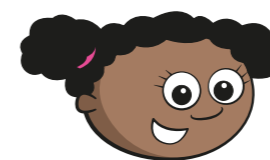
Which shop should Aisha buy her paint from? \_\_\_\_\_  
Explain your reasoning.

---



---

- 8  $146 \div 5 = 29$  remainder 1  
 $117 \div 4 = 29$  remainder 1



This means that  
 $117 \div 4 = 146 \div 5$

Do you agree with Whitney? \_\_\_\_\_  
Explain your thinking.

---



---



---

- 9 I'm thinking of a 3-digit number.  
When I divide it by 5, I am left with a remainder of 3  
When I divide it by 10, I am left with a remainder of 8  
It rounds to 200 to the nearest 100  
It has one hundred.  
What could my number be?

Create your own problem like this for a partner.

