

Equivalent lengths – m and cm

- I There are 100 centimetres (cm) in 1 metre (m).
Use the bar models to complete the sentences.

1 m
100 cm

a)

1 m	1 m	1 m

There are cm in 3 m.



b)

1 m	1 m	1 m	1 m	1 m	1 m

There are cm in 6 m.

c)

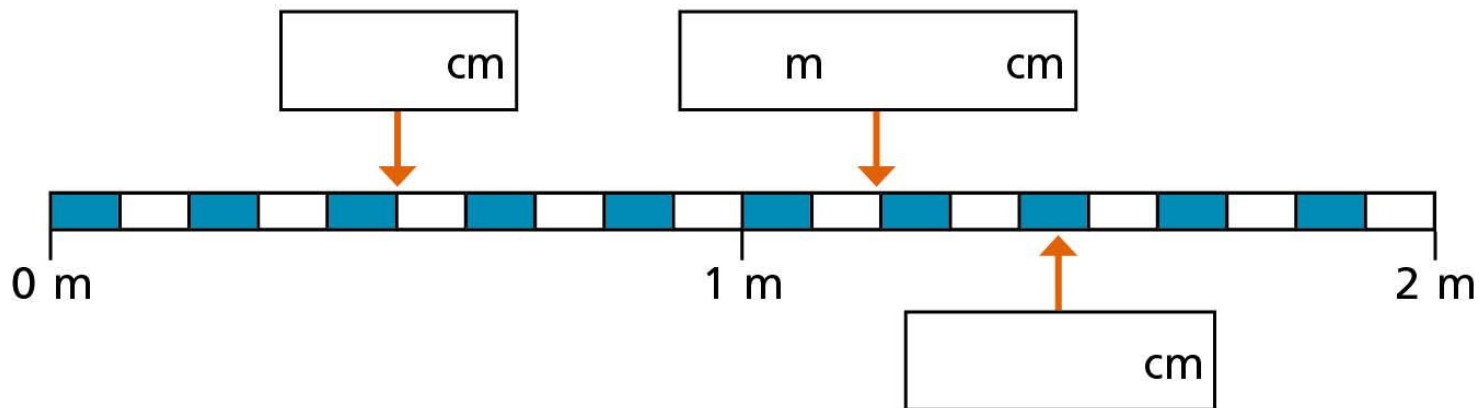
100 cm	100 cm	100 cm	100 cm	100 cm

There are 500 cm in m.

- 2 Complete the table to show equivalent lengths and continue the pattern.

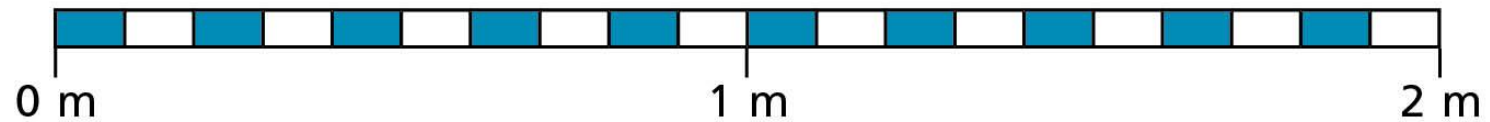
cm	m and cm
310 cm	3 m and 10 cm
320 cm	m and cm
330 cm	m and cm
cm	3 m and 40 cm
cm	3 m and 50 cm
cm	m and cm
cm	m and cm

3 Write the missing measurements.





- 4 Draw an arrow to show the position of each measurement.

**A**

20 cm

B

0 m 75 cm

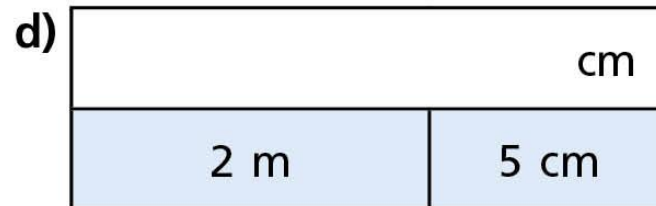
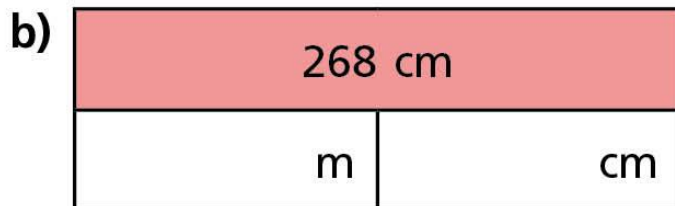
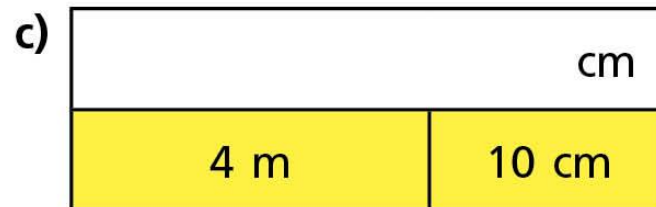
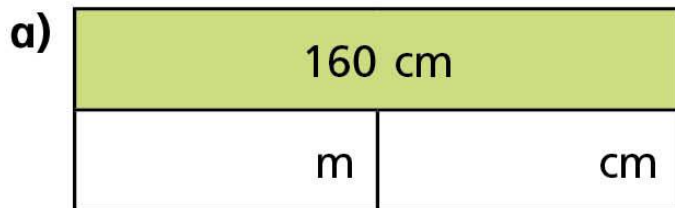
C

130 cm

D

1 m 65 cm

5 Complete the bar models.



6 Complete the sentences.

a) $240 \text{ cm} = \square \text{ m and } \square \text{ cm}$

b) $319 \text{ cm} = \square \text{ m and } \square \text{ cm}$

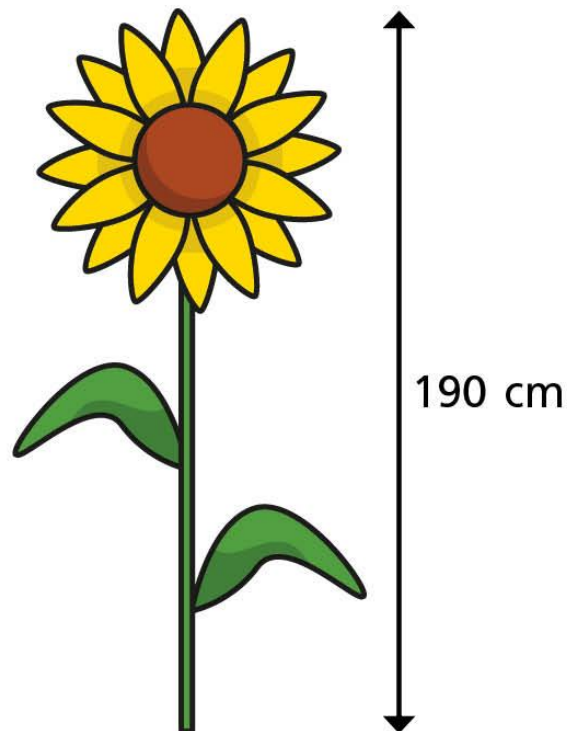
c) $508 \text{ cm} = \square \text{ m and } \square \text{ cm}$

d) $2 \text{ m and } 15 \text{ cm} = \square \text{ cm}$

e) $8 \text{ m and } 3 \text{ cm} = \square \text{ cm}$



7 Here is Huan's sunflower.



Dani's sunflower is 2 m and 30 cm.

Tom's sunflower is exactly halfway between Huan's and Dani's.

How tall is Tom's sunflower?

Write your answer in metres and centimetres.

m and cm